

# SILPRO

## SilproPaver™ Sand

POLYMERIC JOINT SAND

Reduces Joint Erosion  
Inhibits Weed Growth  
Discourages Ant Hills  
For Joints To 4 in. (10.2 cm)

SILPRO, LLC / 2 NEW ENGLAND WAY / AYER, MA 01432-1514 / 800-343-1501 / 978-772-4444 / FAX 978-772-7456 / WWW.SILPRO.COM



**SilproPaver™ Sand** is a proprietary mixture comprising polymers, sand, and various other components to produce a unique sand for use in filling the joints on driveways, patios, pool decks and walkways.

**SilproPaver™ Sand** differs from conventional sand in that it becomes extremely hard and durable once water has been applied to it. After **SilproPaver™ Sand** has been misted with water and allowed to dry, its distinctive combination of ingredients and polymers form a very strong and dense joint that bonds pavers, including concrete, brick and stone, yet remains flexible enough to withstand movement.

### USE SILPROPAVER™ SAND FOR:

- Filling and stabilizing joints up to 4 in. (10.2 cm) thick
- Driveways, walkways, patios, and pool decks (except coping)
- Most types of pavers, including concrete, brick and stone

### ADVANTAGES

- Reduces joint erosion
- Reduces weed growth
- Discourages formation of ant hills

### APPLICATION

Confirm that the surface of the pavers is clean and dry.

Using a broom, fill the full depth of the joints leaving 1/8" from the top of the pavers. Vibrate the entire paver surface for joints less than 1/4". Add additional sand as needed.

Use a stiff bristled broom for the initial sweeping of the **SilproPaver™ Sand** followed by a soft bristle broom to sweep the excess sand off the surface.

Use a leaf blower to remove any remaining material.

Water the **SilproPaver™ Sand** at no more than 50 ft² at a time. Set your nozzle to the shower setting. Start watering from the lowest elevation on the project. Water for approximately 1 minute per 50 ft². Make sure not to displace the **SilproPaver™ Sand**. Water must soak into the sand at least 1 inch. Confirm the area was saturated by using a pen or similar object to lift the sand. Place the sand back after confirming the area was saturated.

Remove any standing water with a leaf blower.

Allow the **SilproPaver™ Sand** to harden for a minimum of 24 hours. Additional time may be required in cold or damp conditions. Do not go on the area during this period. Tarp the area if rain is expected and remove once the rain has stopped.



Reduces Joint Erosion

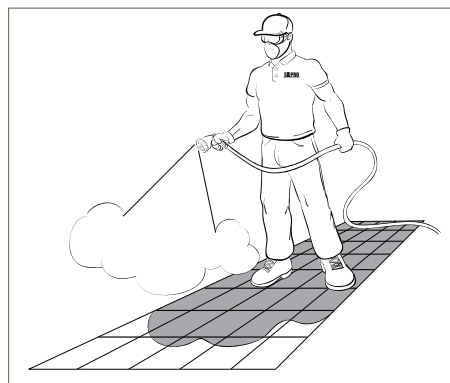
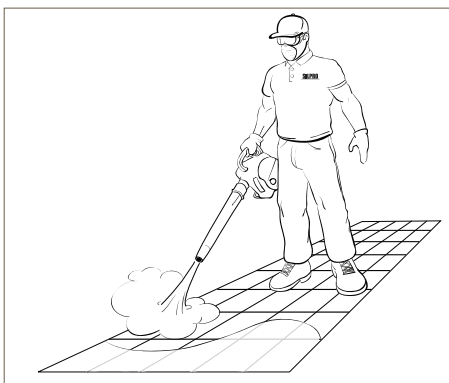
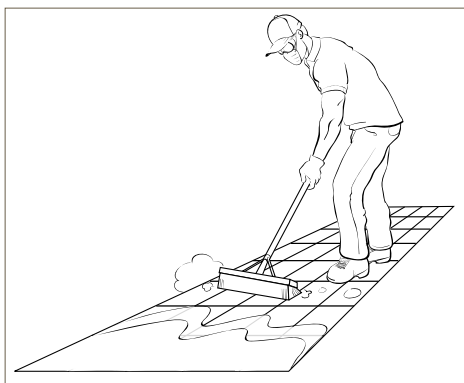


Inhibits Weed Growth



Discourages Formation of Ant Hills

For Customer Service, Call Silpro at 1-800-343-1501



Note: Refer to written application instructions for installation details.

### WAITING PERIOD BEFORE USE

Areas may be put into use as soon as completely dry. This can take as little as 1 hour depending on temperature and other factors.

### LIMITATIONS

- Apply a minimum of 12 hours before rain is expected
- Apply only when surface and ambient temperatures will be 32°F and above for 12 hours and maintain this temperature for 24 hours after application
- Do not use in areas subject to standing water. All paver surfaces should have minimum inclines for proper drainage. Pavers around in-ground pools must have an incline of 1/8 in. (3mm) per foot away from the pool for drainage
- Do not use on pavers that are applied on top of concrete
- Do not sweep over asphalt

### PACKAGING

50lb (22.7kg) bag

### APPROXIMATE COVERAGE

Per 50lb (22.7kg) bag

60-90 ft<sup>2</sup> for narrow joints

20-45 ft<sup>2</sup> for wide joints

### SHELF LIFE

2 year

### COLORS:

SilproPaver™ Sand is available in Beige and Slate Gray.

### CAUTION!

SILPRO offers products that may contain cement, latex, epoxy, and other chemicals. Please review the Safety Data Sheet before the use of this product.

### GUARANTEE

Please call SILPRO, LLC for copy of guarantee.

# SILPRO